



Accurate energy monitoring and power quality at every circuit

PowerLogic™ HDPM6000 metering system



se.com/hdpm

Life Is On

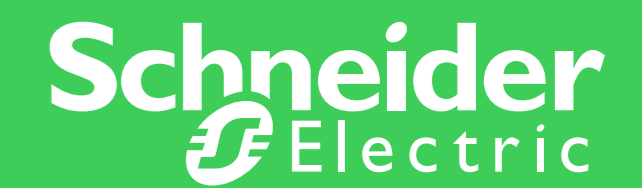


Table of contents





Discover HDPM6000

Achieve energy accountability and regulatory compliance

The HDPM6000 high-density metering system provides the energy data you need, making energy monitoring simple. Designed to continuously capture data on every circuit, the HDPM6000 enables precise energy usage tracking to improve energy efficiency, reduce waste and lower utility bills. Save time and reduce errors by automatically generating energy consumption reports for cost allocation and regulatory compliance.

Life is On | Schneider Electric



Improve your power quality to avoid downtime

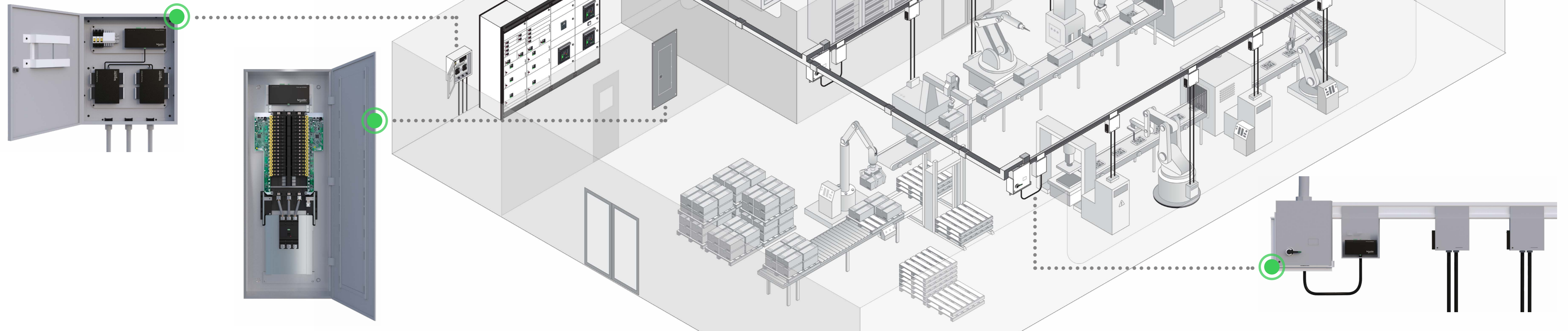
The HDPM6000 power metering system lets you monitor the quality of power in every circuit for complete visibility across your entire electrical infrastructure. Diagnose power problems quickly and precisely with detailed, circuit-level information. Capture voltage disturbances and assess harmonics to maximize asset performance, reduce equipment damage, avoid device malfunctions and prevent power disruptions.

Life is On | Schneider Electric



Flexible metering system for new construction or retrofit

The HDPM6000 multi-circuit power metering system is modular, scalable and adaptable to almost any situation. It is the perfect high-density metering solution for main circuits and branch circuits in any type of electrical panel or busway system. Its flexible and innovative design minimizes installation times and integration costs and the system can be expanded easily at any time.



Discover
HDPM6000

Explore HDPM6000



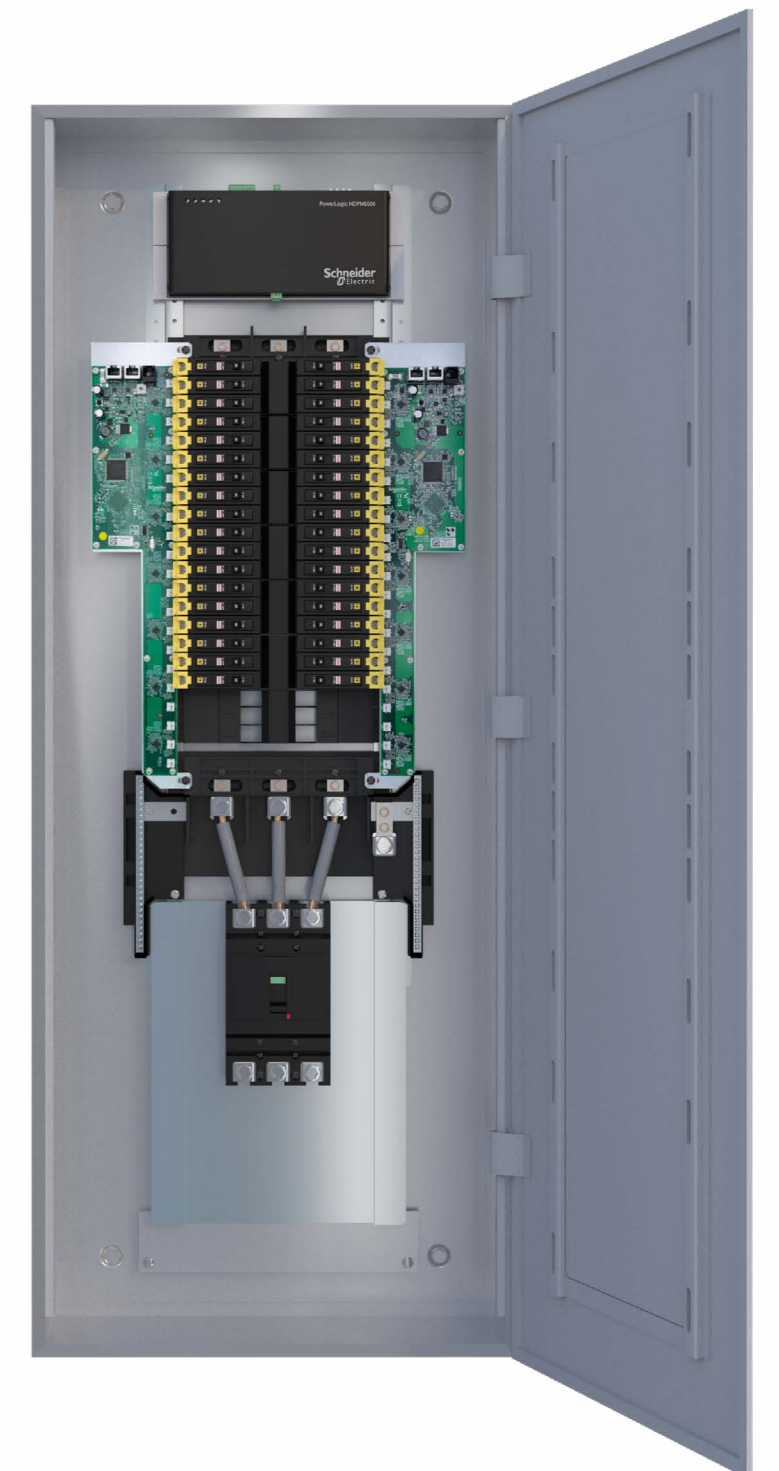
Enable electrical network management in new installations

HDPM6000 panelboard metering solutions are intended for new construction when energy and power quality monitoring is required down to the branch-circuit level. They are well-suited for panelboards, power distribution units (PDUs) and remote power panels (RPPs).

The HDPM6000 head unit measures 3-phase power feeding the panelboard, and the metering modules measure power on all the outgoing branch circuits. The head unit is mounted beside the main breaker, connected to instrument current transformers (CTs) installed on each phase of the main incoming circuit.

Panelboard metering modules are mounted vertically beside branch-circuit breakers and are connected to CTs installed on each branch-circuit via click-in connectors. HDPM6000 panelboard metering modules have two Ethernet ports for connecting to other metering modules.

Each HDPM6000 head unit can support a daisy-chain up to 8 (4 pairs) panelboard metering modules for a total of 168 circuits.



Retrofit into any type of electrical panel

HDPM6000 retrofit metering solutions are designed to add main, feeder and branch-circuit metering to any type of electrical distribution panel, without the need for mechanical or electrical design changes to the existing panels.

CTs installed on the main incoming circuit are connected directly to the head unit, while CTs installed on any downstream feeder and branch circuits are connected to retrofit metering modules. There are three HDPM6000 retrofit metering module options: 24 circuit, 42 circuit and 84 circuit. Each head unit can support up to 192 circuits from downstream retrofit metering modules.

HDPM6000 retrofit metering enclosures containing a head unit and multiple retrofit modules are an effective way to achieve power quality monitoring and high-density metering for any type of electrical panel that did not have any metering capabilities previously.



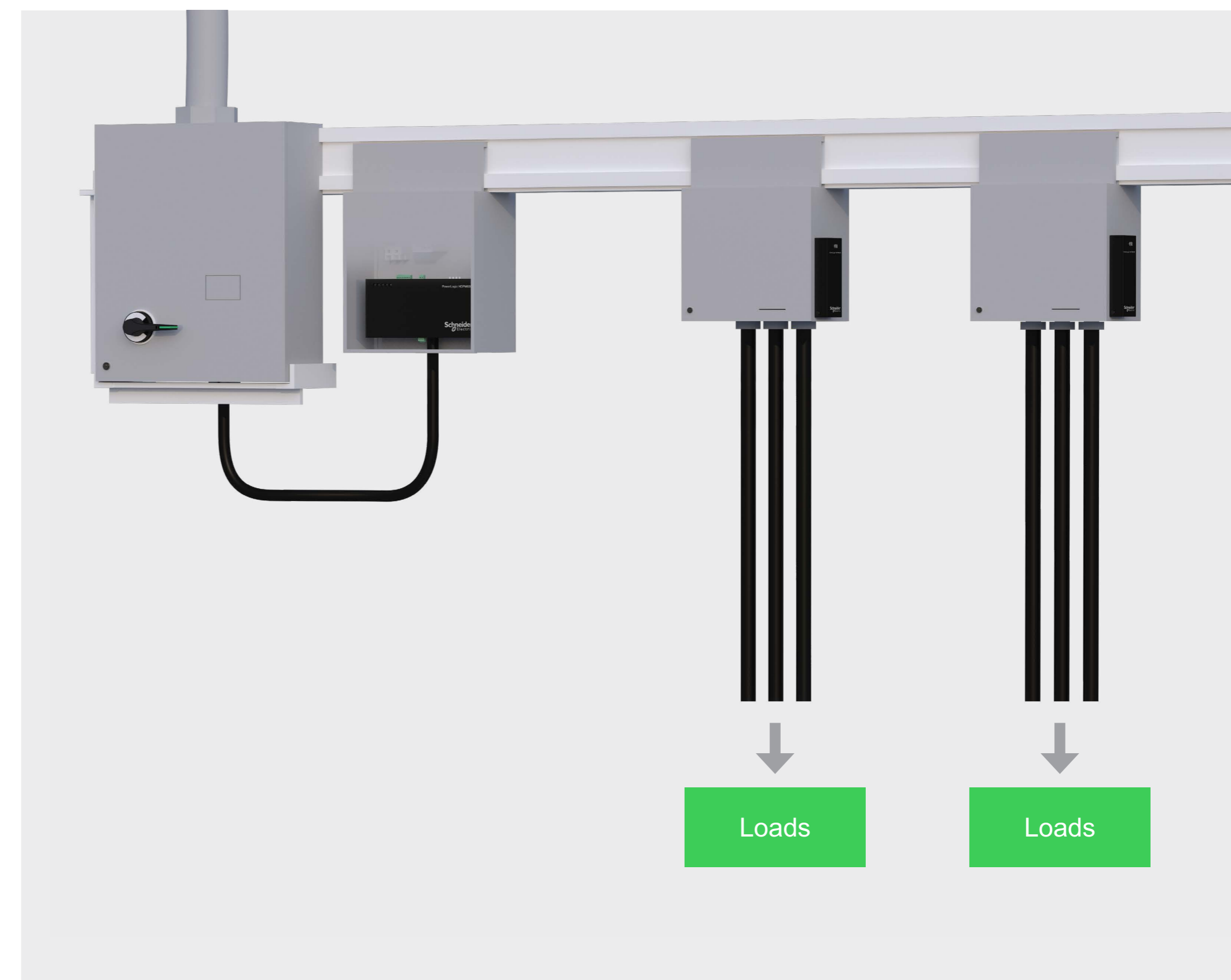
Add metering to any busway configuration

HDPM6000 busway metering solutions are engineered for new construction or retrofit when energy and power quality monitoring are needed on every circuit feeding loads from a busway distribution system.

HDPM6000 head units monitor the power feeding each busway trunk, and busway metering modules monitor the outgoing power from each tap box.

Head units are connected to CTs installed in main trunk breaker boxes, while busway metering modules are connected to CTs installed on outgoing circuits in tap boxes.

There are two HDPM6000 busway metering module options: 4 circuit and 8 circuit. Metering modules have two Ethernet ports so they can be connected in a daisy-chain. Each head unit can support up to 192 circuits from downstream busways metering modules.





Perfect for
your business

Commercial buildings

Smart buildings require flexible and adaptable metering solutions as their needs change. They also need IoT-connected capabilities to adapt to changing requirements in power-critical facilities.

With a modular platform approach to minimize integration costs, start-up time and operational expenses, HDPM6000 meters provide insight, accuracy and results. The platform supports standard open protocols, helping integrate connected products and create resilient, future-ready buildings. Perfect for commercial malls, office buildings and multi-residential sites.



Data centers

In an environment where one hour of downtime can cost millions, data centers cannot afford to neglect power availability, yet also face mounting pressure to make wise use of their energy dollars while still maintaining 24/7 uptime. The HDPM6000 power metering system can help manage these demands by providing utility grade data at the branch circuit on busway systems, panelboards, remote power panels (RPPs), power distribution units (PDUs), switchgear and distribution panels.

With power and energy data on branch circuits and mains in a PDU or RPP, HDPM6000 provides an accurate vision of your capacity, energy use and reliability.



Healthcare facilities

Healthcare facilities require extraordinary reliability from their power systems. It's crucial for ensuring a safe, healthy hospital environment. Unplanned outages threaten patient safety, damage reputations and create financial strain.

Schneider Electric's HDPM6000 power metering system can help reduce the number and duration of unplanned outages by analyzing and interpreting power quality data, which can be used to improve system-wide performance and help determine the causes of malfunction or downtime. The platform allows you to compare power usage across circuits to discover trends over time.

Life is On | Schneider Electric



Power critical industries

Every power network has unique requirements, and power critical facilities need to keep the power on. In industrial sites with a high density of circuits, the HDPM6000 power metering system has the flexibility you need to easily tailor to suit specific or dynamic installations.

Analyze power quality data to improve operational efficiency and accurately correlate circuit- and process-specific operational expenses, identify and target efficiency measures and increase productivity. Utilize the HDPM6000 meters to harness industry-leading monitoring capabilities for maximum power reliability.





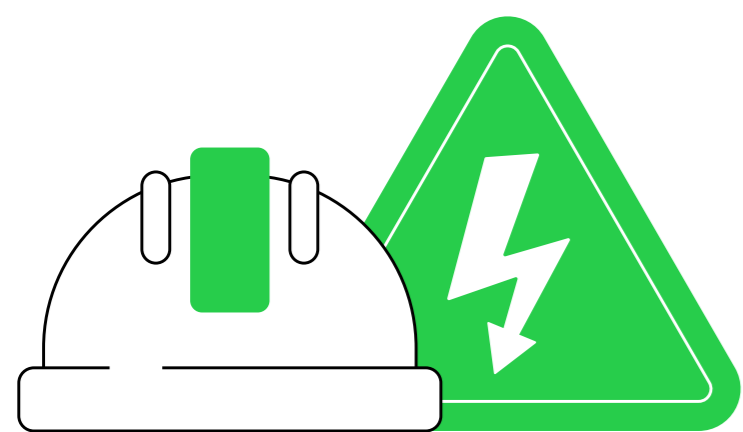
Take it further with EcoStruxure

Integrated Building and Power Management:
Connected devices, edge control software and digital
services for enhanced productivity and improved resilience

EcoStruxure innovation at every level

EcoStruxure is Schneider Electric's IoT-enabled, plug-and-play, open, interoperable architecture and platform that unites Power and Building Management with connected devices, edge control software and digital services for enhanced productivity and improved resilience.

EcoStruxure simplifies your operations and provides the insights and decision support you need to maximize:



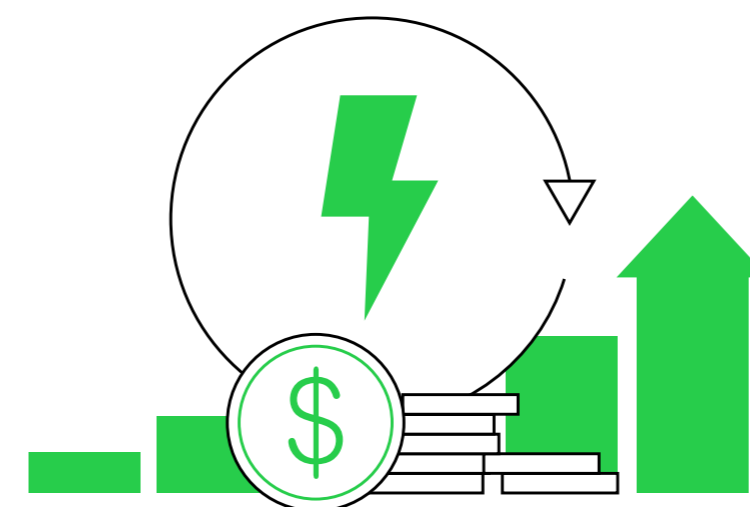
Safety

Reduce risk of electrical fires, ensure safe operation of electrical systems and protect staff and patients from electrocution and shock.



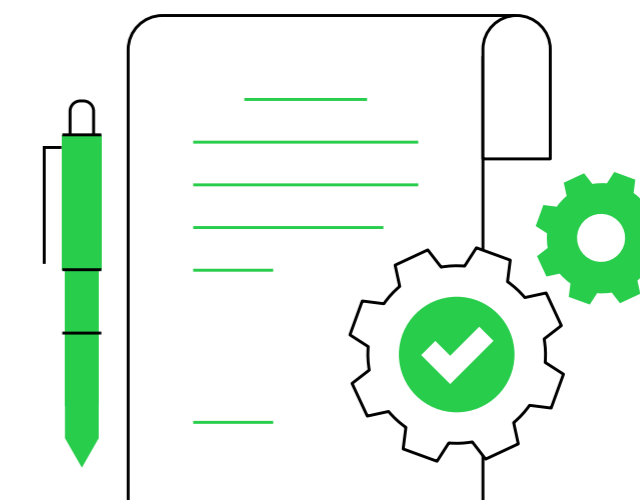
Availability

Gain resilience with distributed energy resources, enhance electrical asset maintenance and avoid unplanned downtime from electrical failure.



Efficiency

Reduce energy usage and costs, improve operational efficiency and achieve greater sustainability.

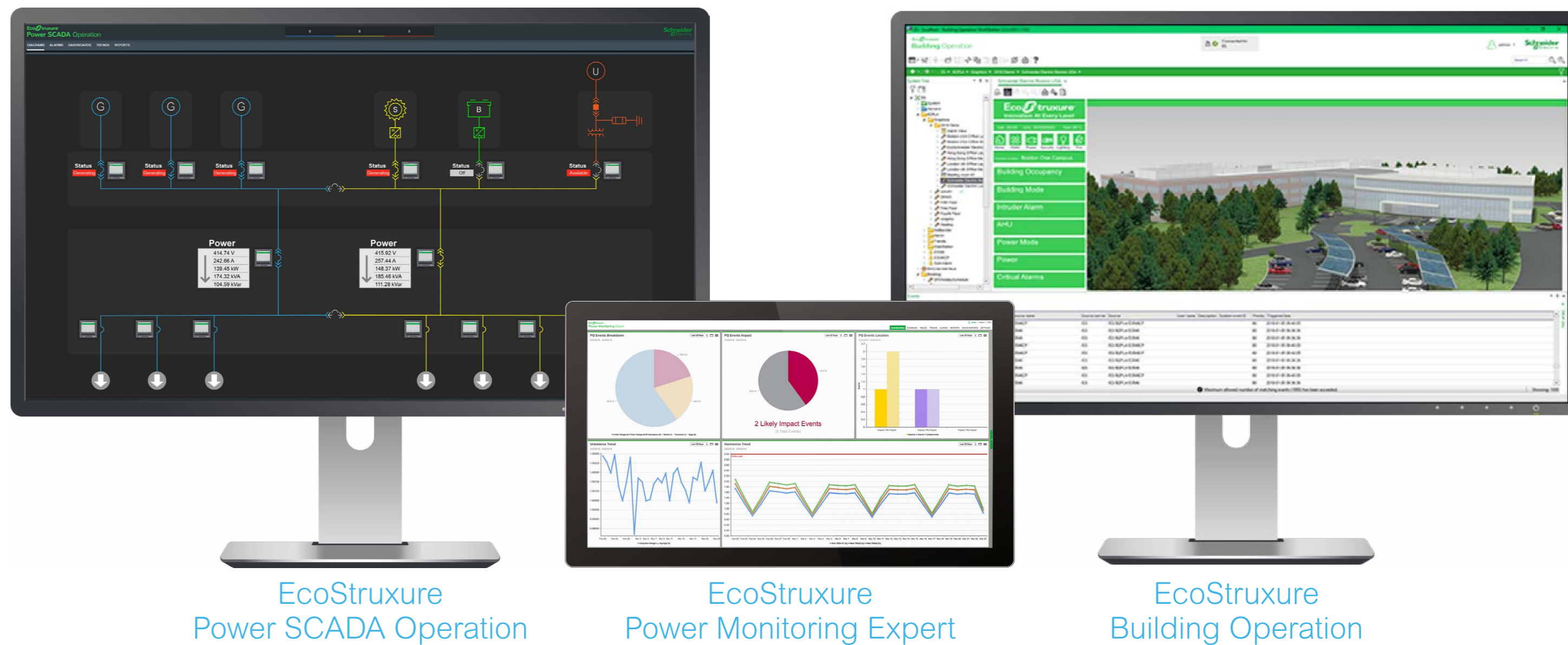


Compliance

Adhere to local and international standards for faster project execution and simplified regulatory compliance.

EcoStruxure edge control software

Future-proof your facility with EcoStruxure supervisory software to get the right information to the right people at the right time. Our edge control software platforms are engineered to work together to provide real-time visibility of electrical and critical building infrastructure and allow you to control the environmental conditions in every part of your facility.



Digital services

Reduce maintenance costs and maximize system uptime with real-time data on infrastructure performance. Get actionable predictive maintenance information that protects your customers, safeguards your reputation and minimizes financial impact.

- Optimize energy efficiency and reduce energy-related costs
- Reduce downtime from network issues or equipment failure
- Improve predictive maintenance and reduce reactive maintenance issues



Field services

Site safety

- Reduce risks during operations
- Maximize site availability and utilization
- Reduce insurance cost

New installations

- Certify the reliability and safety of your equipment
- Fully understand your new installation
- Have a single point of contact during on-site work

Infrastructure maintenance

- Fast replacement of obsolete components with newer, more efficient equipment
- Enhance cybersecurity and safety
- Have access to the right parts at the right time



A network of certified innovators

Working with partners we trust is as important to us as it is to our customers. EcoXperts deliver innovative and sustainable solutions, through integrated technology and digitization, to our shared customers. Trained and certified by Schneider Electric, our ecosystem of EcoXpert partners provide best-in class services and digital solutions that will exceed your expectations.



Life is On | Schneider Electric

Future-ready power systems

EcoStruxure Power delivers more safe, reliable and efficient power for peace of mind and significant financial benefits. IoT-enabled future-proof solutions are tailored to meet your specific needs and simply work. Our digitized LV and MV solutions are powered by innovation at every level – enabling enhanced connectivity, real-time operations and smart analytics.

IoT-connected solutions are ready to improve every aspect of your electrical distribution system. Take total control with real-time data and smart analytics for predictive maintenance.



Life Is On



For more information visit:

se.com/hdpm



Schneider Electric

Head Office
35 rue Joseph Monier
92500 Rueil Malmaison Cedex- France
Tel.: +33 (0)1 41 29 70 00
www.se.com

November 2020